

DANCOVER[®]

.com

Manual
for
Livestock Shelter
5x6x3,23m

Instruction manual ver. 2.3

5 x 6 m transportable cottage

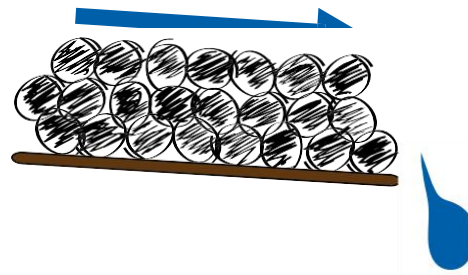


Checklist to: Transportable cottage 5 x 6 m [0500-000]

- 2 Pcs. Side bottom frames 590 cm [0500-110]
 - 2 Pcs. Gable bottom frames 500 cm [0500-100]
 - 4 Pcs. Corner angles [0500-150]
 - 4 Pcs. Brackets to bottom frame [0500-155]
 - 5 Pcs. Rafters [0500-SÆT]
 - 2 Pcs. Gable posts [0500-160]
 - 1 Pcs. Lifting brackets [0500-173]
 - 2 Pcs. Straight struts [0500-172]
 - 4 Pcs. Oblique struts [0500-171]
 - 14 Pcs. Roof battens 6 m [3856-600]
 - 7 Pcs. Gable plates [0500-550]
 - 24 Pcs. Roof plates [STÅLC-05-322]
 - 10 Pcs. Bargeboard [0500-810]
-
- 1. 66 Pcs. 12X30 mm machine bolt [4000-400]
 - 2. 75 Pcs. 8X50 mm wood bolt [4000-405]
 - 3. 30 Pcs. screws to the side (screws to thick steel) [4000-410]
 - 4. 500 Pcs. Roof screws 4,8x35 mm [4000-410]



Upon delivery of materials, check whether the correct material has been received.



The instructions manual is based on 8 steps:

1. Bottom frame
2. Rafter and gable posts
3. Battens
4. Roof plates
5. Side plates
6. Gable plates
7. Bargeboard
8. Finishing

If you have purchased accessories, there are instructions for each of these in the following 8 points:

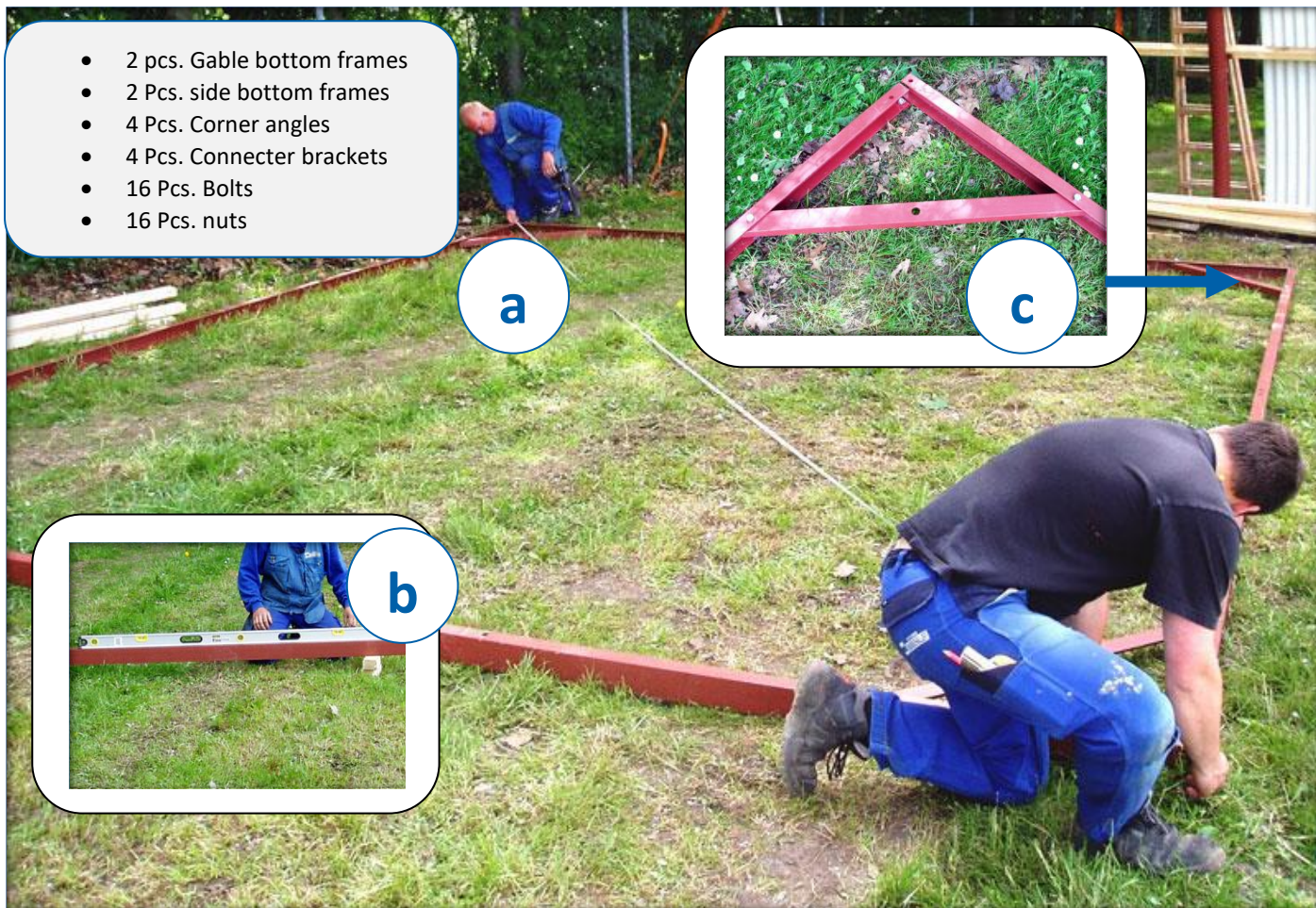
1. Wheel fittings
2. Corner protector
3. Extra height
4. Interior wood
5. Animal gate
6. Door
7. Extension
8. Overhang

Congratulations with your new construction and good luck with the assembly!

1. Bottom frame

Important: Now decide how the frame should face. Position it so the open end, faces away from the wind direction. The bolts should NOT be tightened yet - this happens in step 3!

- (a) Cross measure the frame
- (b) The frame needs to be leveled
- (c) Mount the corner angles (if the cottage is used for animal, the corner must be covered with sand / soil).

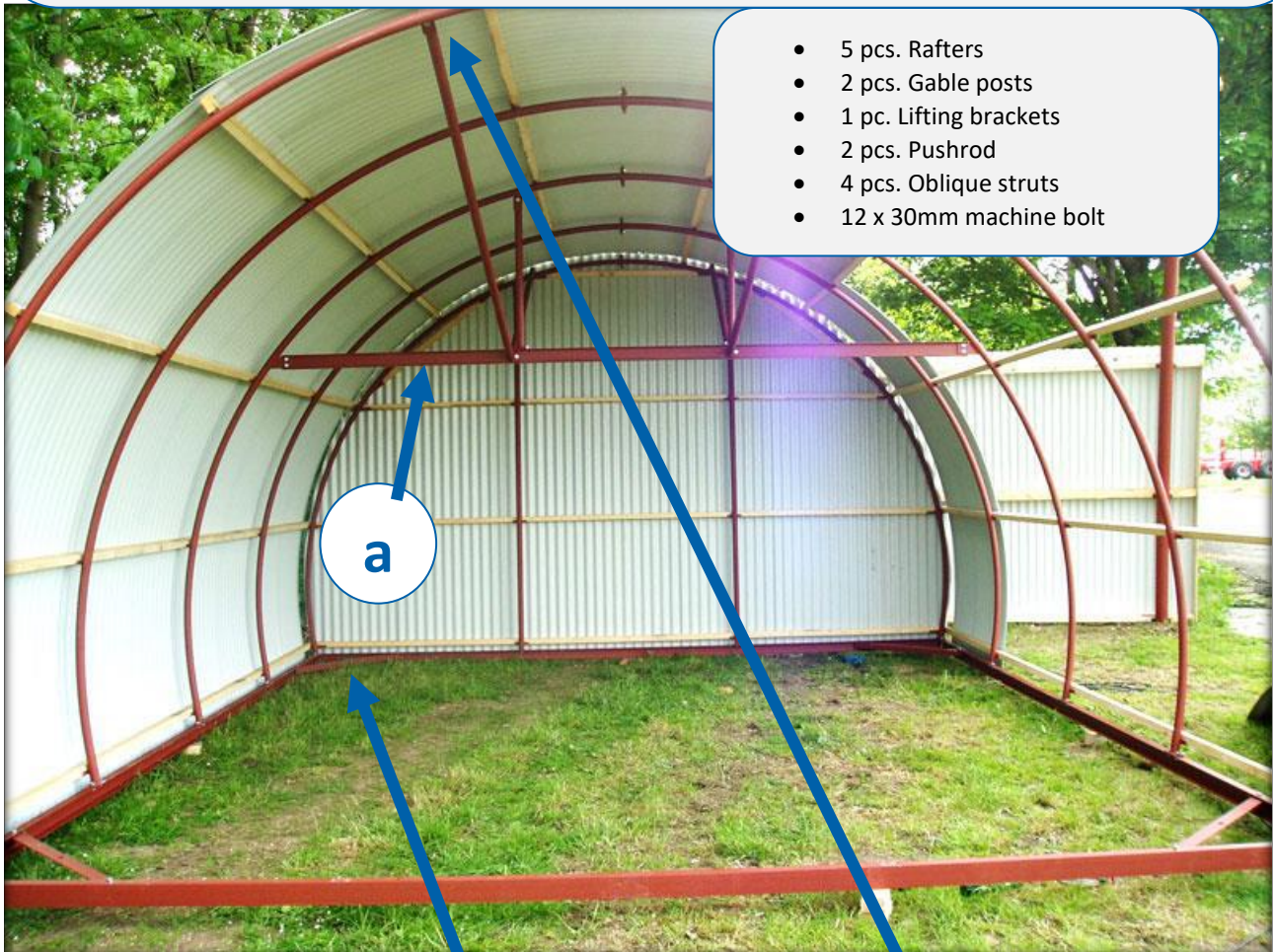


Important: *The bottom frame must be level and at right angles to make installation easier.*

2. Rafter and gable posts

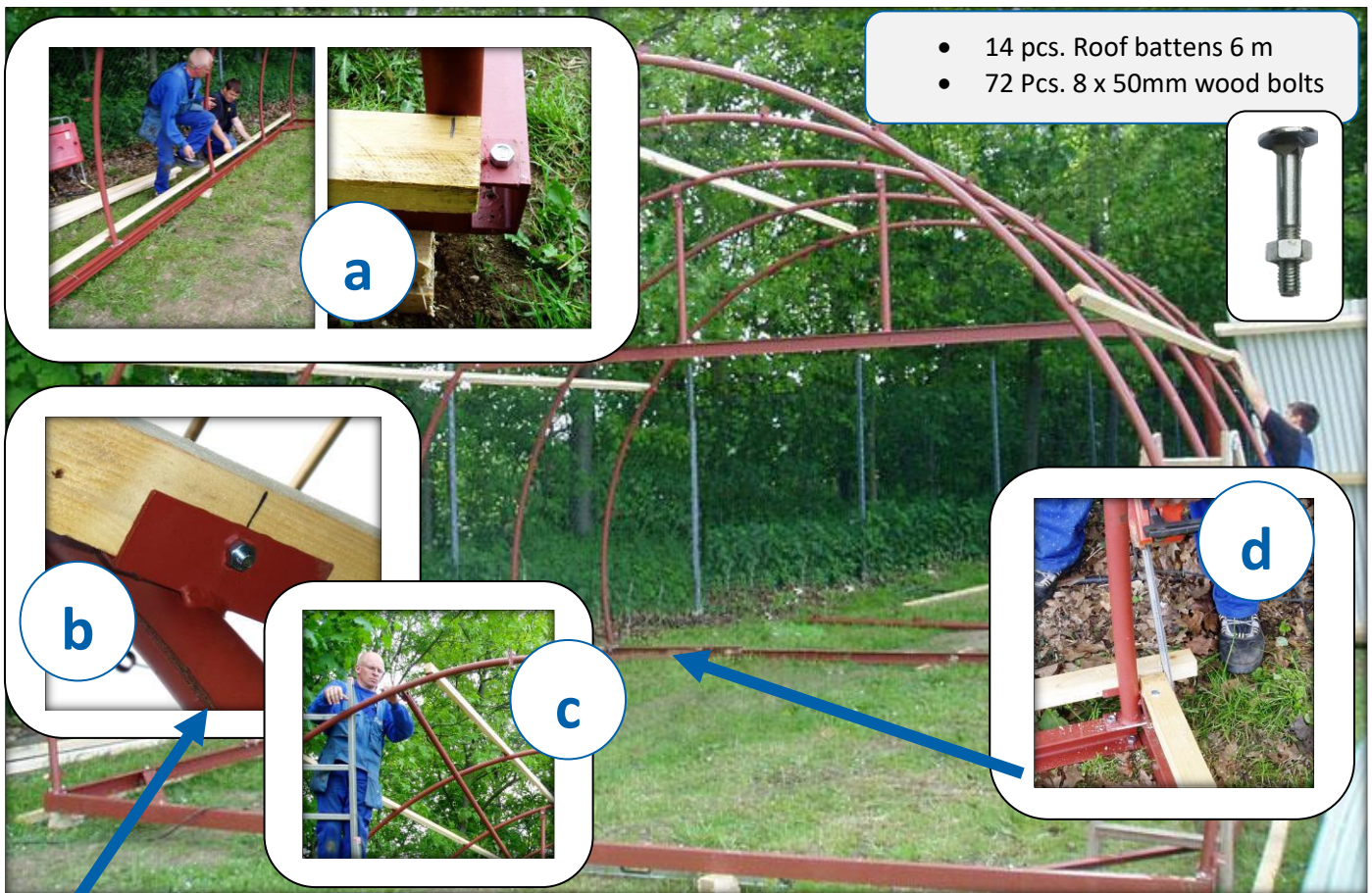
The bolts should **NOT** be tightened yet - this happens in step 3!

- (a) Mount the lifting bracket on the rafter which is to stand in the middle. Note that only rafter 2 and 4 are the same.
- (b) Mount the rafters on bottom frame, do not tight the bolt (corner assembly)
- (c) Straighten out the straps for oblique struts with a hammer.
- (d) Mount the gable posts



3. Battens

- (a) You need to measure at the bottom frame, to get the length of the batten. Start in the open end so the batten fits into the outer pipe arch.
- (b) Bolt the battens into the brackets
- (c) When all the battens are mounted, place the arches in plumb and the oblique struts mounted.
ALL MACHINE BOLTS AND WOODEN BOLTS NEED TO BE TIGHTENED!
- (d) Now, cut the ends in the closed gable



Important: To avoid skew in the construction, which makes it difficult to install roofing sheets, it is **IMPORTANT** that all battens are marked up exactly (b)

4. Roof plates

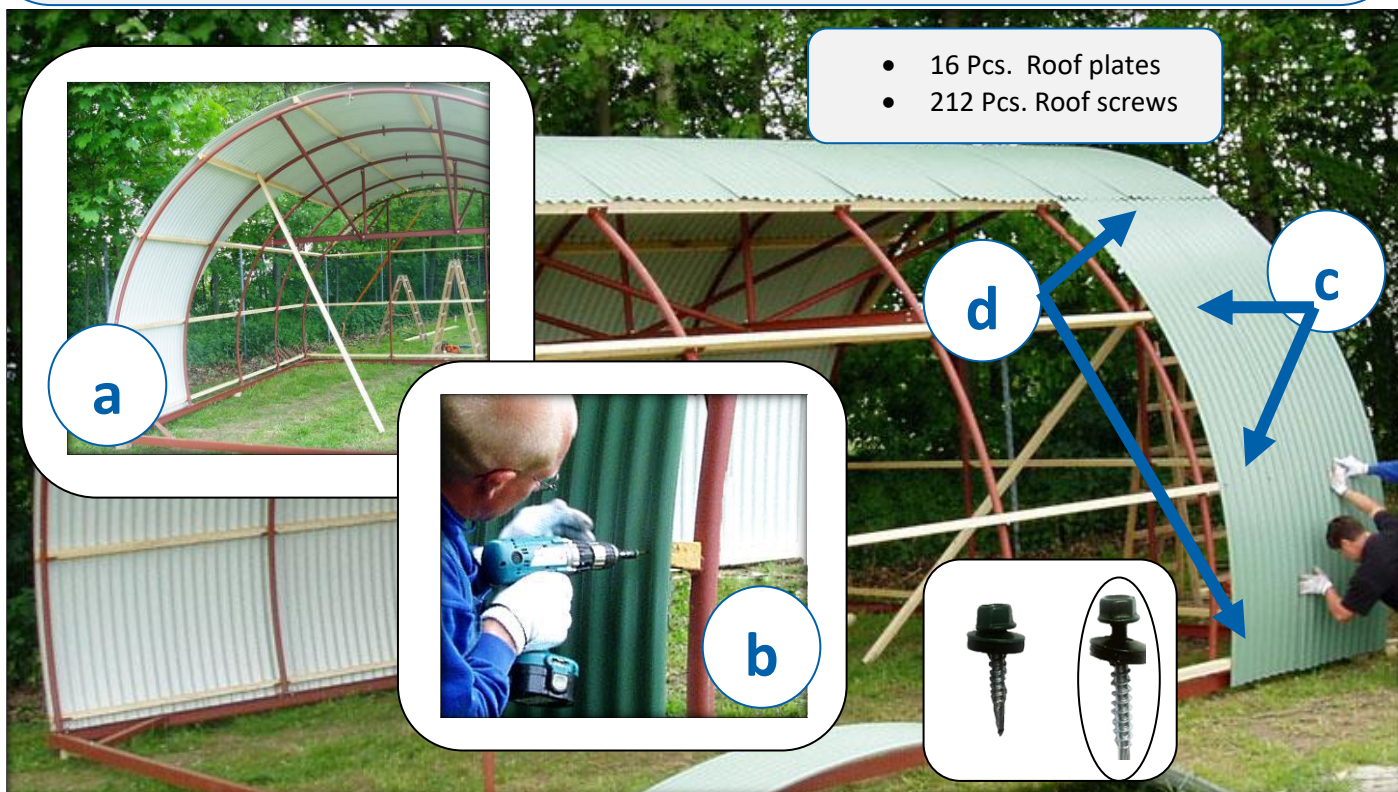
- (a) Start the installation of roofing plate at the open end from the top, at the outer edge of the first rafter (it is important that the battens are also cut clean with the outer edge of the first rafter).
- (b) With 1½ corrugation overlay, place 8 roofing sheets on top. The screws are inserted in the middle of the plates and in the joints in each batten. The screws are mounted in the bottom of corrugation.

NOTE! If there are **LIGHT WINDOWS**, they must be mounted in a top row.



5. Side plates

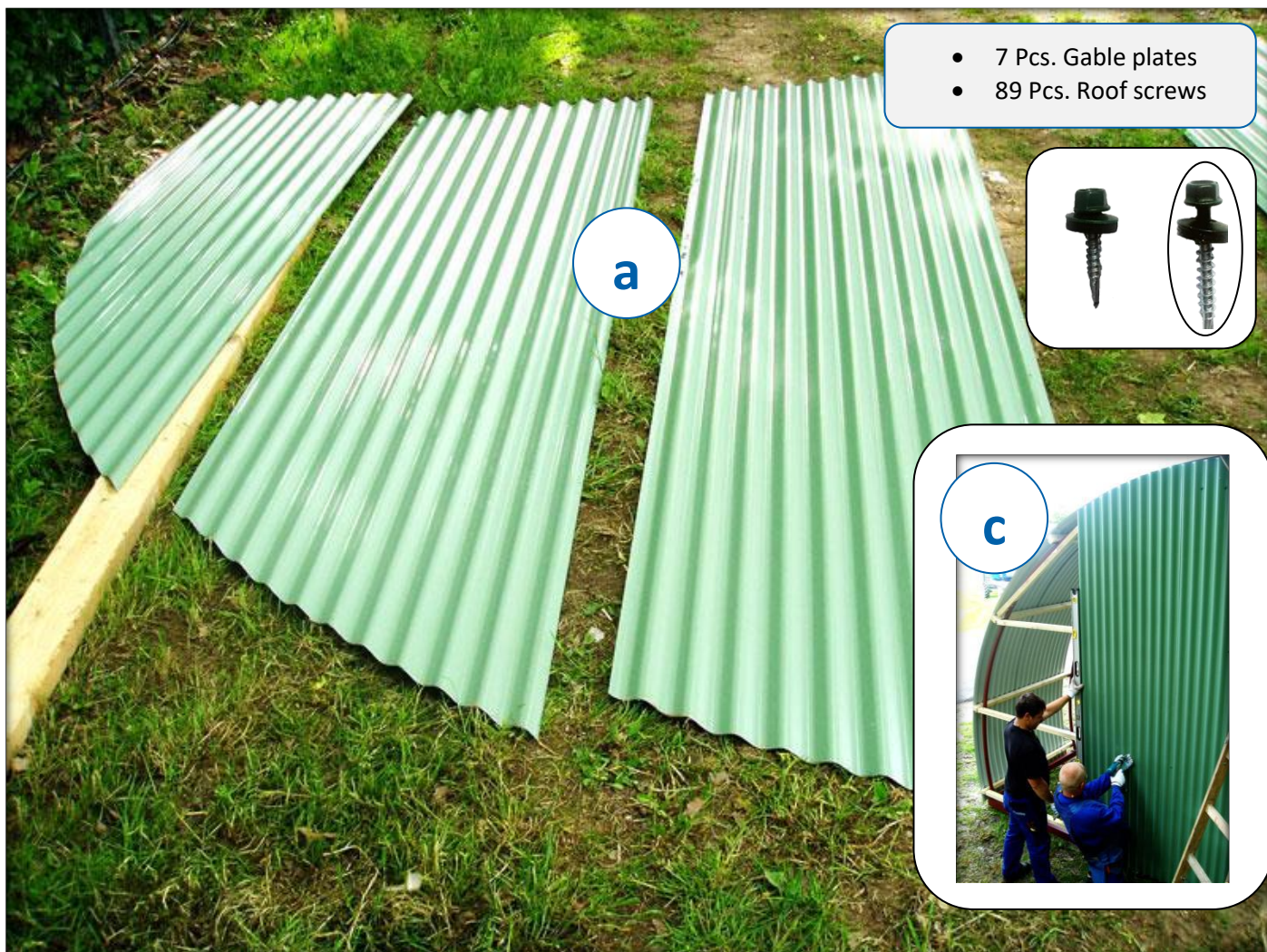
- (a) The side panels are pushed up under the roof panels. This is easily done by lifting the roof plate with a batten.
- (b) A batten is laid out to give the bottom height, now mount the plates with screws in the bottom of corrugation.
- (c) Roof screws in the overlay and in the middle of the plate.
- (d) Roof screws in every other corrugation.



6. Gable plates

- (a) The gable plates are laid out on the ground
- (b) The center of the gable is measured, and a line is drawn on the battens in the middle between the gable columns.
- (c) Start from the center, mount the gable plates, and work towards the sides

It is important that the gable plates are not mounted higher than the roof plates. If a color other than standard is chosen, the end plates will not be cut (use plate cutter or angle grinder with thin cutting disc)

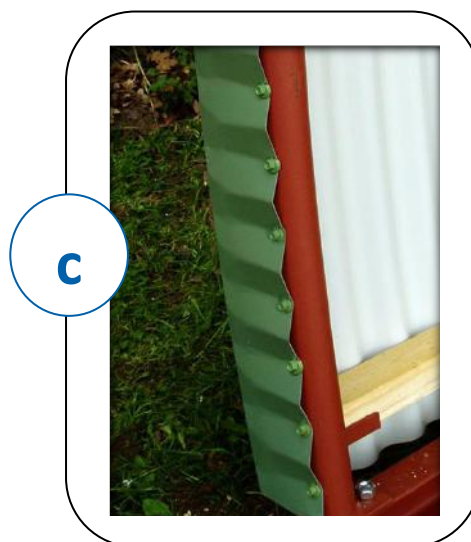
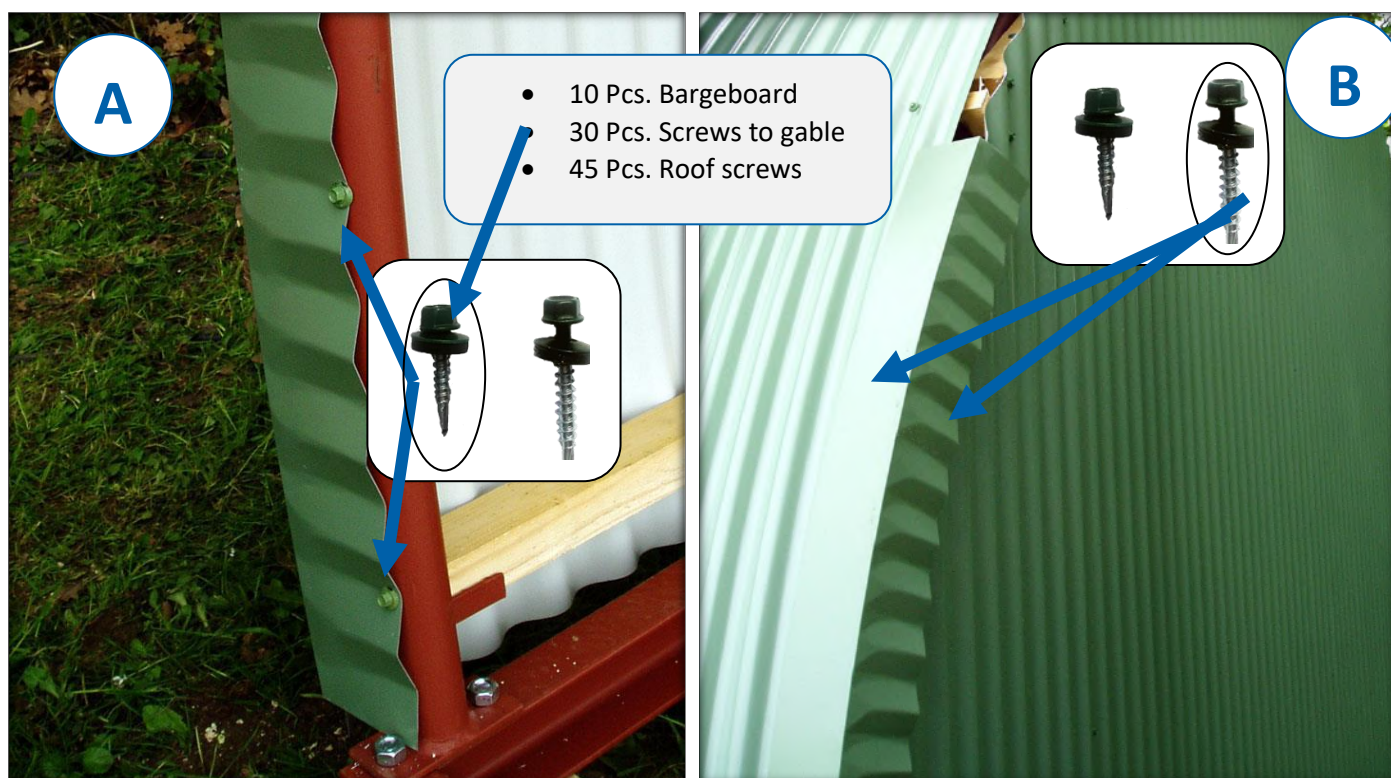


7. Bargeboard

When you start mounting the bargeboard, start from the sides and end at the top.

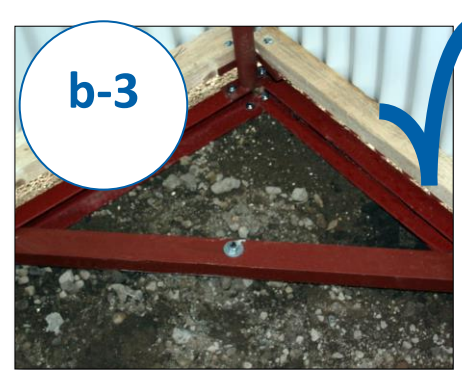
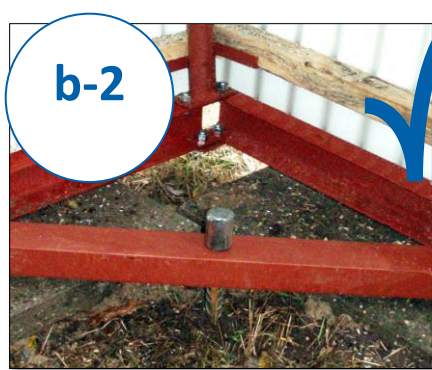
- (a) Open gable
- (b) Closed gable

(c) If the cottage is to be used for animals, it's important to use the extra screws to tighten the angle sheet extra on the lowest 1½ m.



8. Finishing

- (a) Finally, the cottage is now taken off the leveling blocks.
- (b) The cottage is storm-secured with spikes (b-1 and b-2) or with concrete bolts on a point foundation (b-3).
- (c) As mentioned in step 1, it is important that the cottage faces so that the open gable faces away from the wind direction.
- (d) As mentioned in step 1, corners must be covered with sand/soil, if the cottage is used for animals.



note: The anchorage must be appropriate according to the wind direction and location of the cottage.

| 1 / 8 | - Wheel brackets [0500-190] + wheels [0500-191]

- 2 Pcs. Mounting brackets
- 2 Pcs. Axles with tires
- 2 Pcs. Connectors
- 2 Pcs. Stop rings
- 14 Pcs. Machine bolts 12x30 mm [4000-415]
- 14 Pcs. m12 nuts [4000-415]

1. Wheel fittings

The wheel bracket is mounted on the back of the cabin with assembly brackets and bolts.



connector

Stop ring



Isn't necessary on a 5x6m cottage



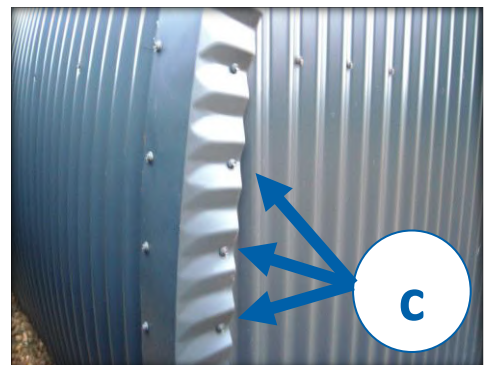
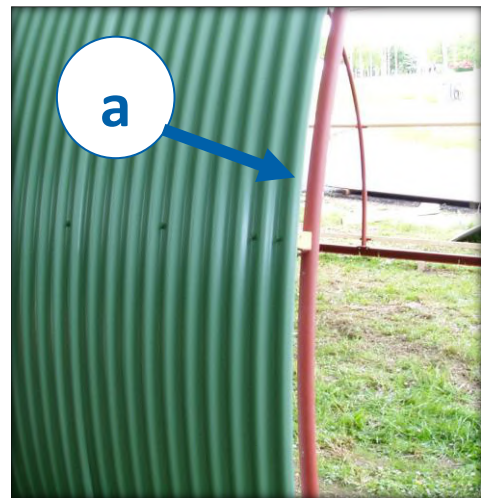
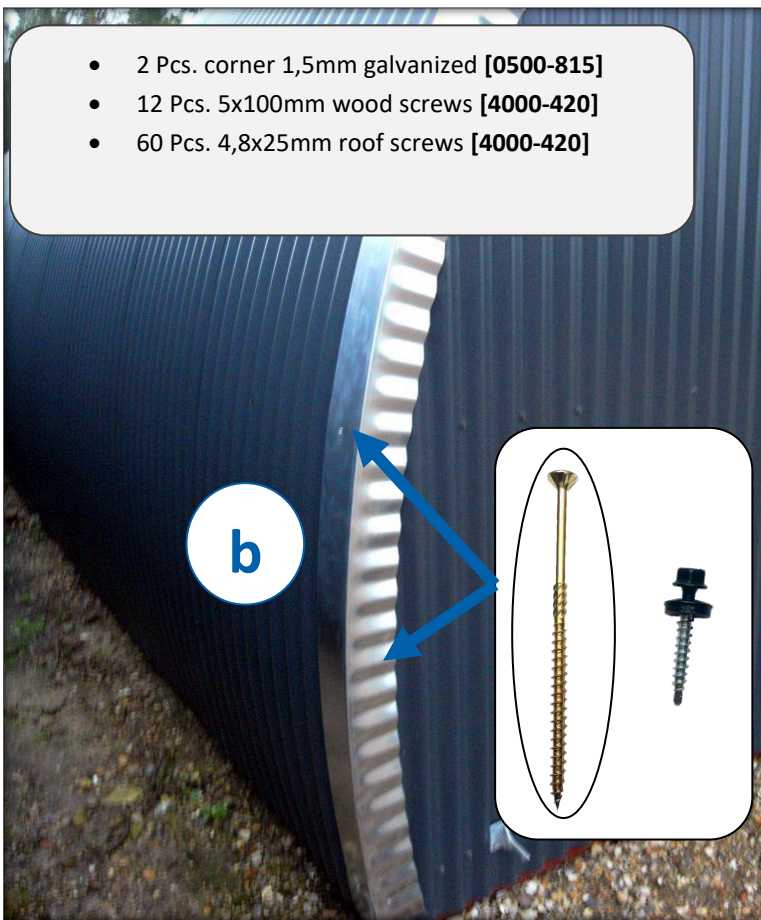
| 2 / 8 | - Corner protector [0500-820]

2. corner protector

Wait to install the lower bargeboard or remove if it is retrofitting.

- (a) **Important:** Roof plate and pipe arch must be flush with each other at the open gable.
- (b) Start by fitting the corner protector (galvanized) with the wood screws, drill if necessary (6 pcs per corner)
- (c) Mount the bargeboard (colored) with the roof screws as in the picture, in every other bottom of the corrugation

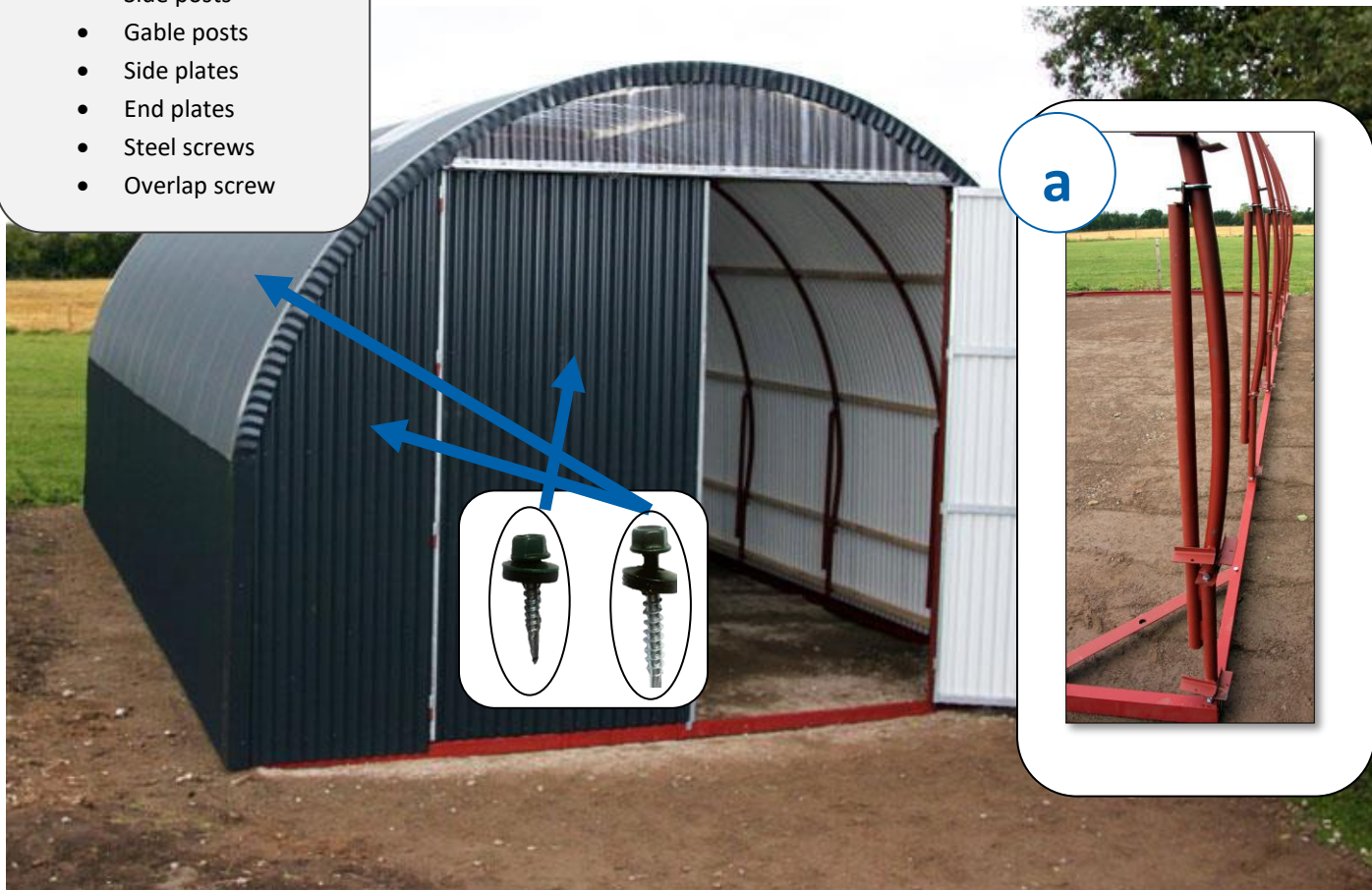
- 2 Pcs. corner 1,5mm galvanized [0500-815]
- 12 Pcs. 5x100mm wood screws [4000-420]
- 60 Pcs. 4,8x25mm roof screws [4000-420]



3. extra height

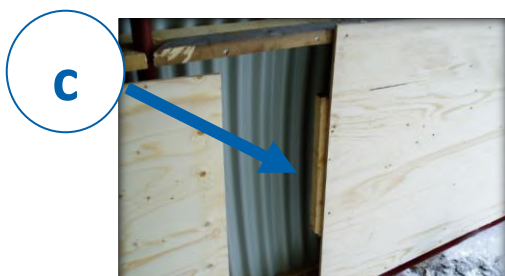
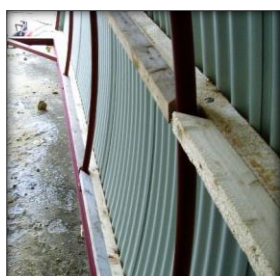
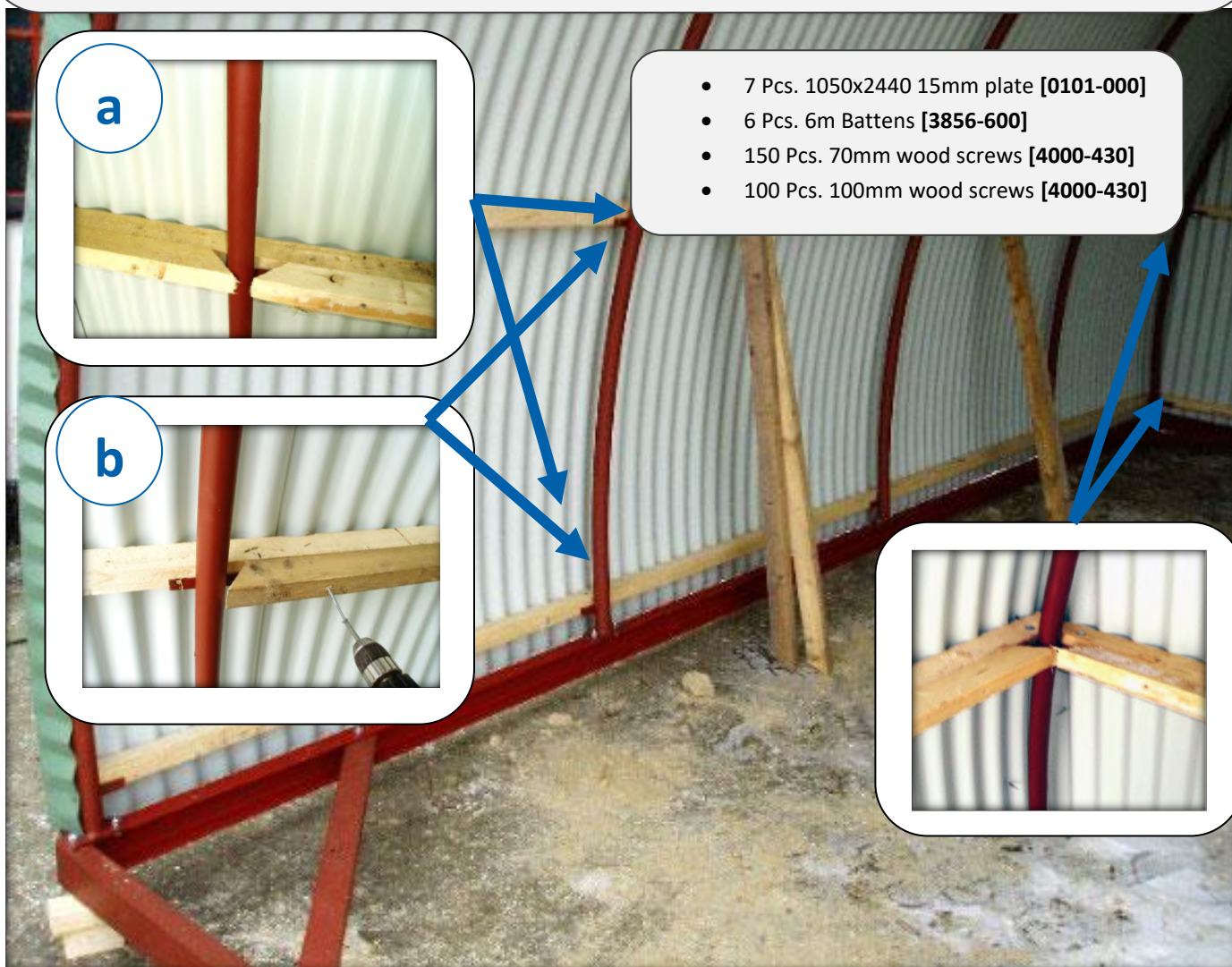
- (a) Mount the additional posts on the side frame by using machine bolts. Next, mount the rafters on the posts
- (b) Mount steel structures and battens, adjust the gate before mounting plates

- Side posts
- Gable posts
- Side plates
- End plates
- Steel screws
- Overlap screw



4. Interior wood

- (a) Saw the battens (remember: the end at 45 degrees) so they fit between the rafters.
- (b) Mount with 4 pcs 5x100 mm wood screw pr. Batten.
- (c) Remember all plate joints must be mounted with some extra wood.
- (d) Start with a whole plate in the open gable, saw it in the right length, assemble it and continue with the next. When you reach the closed gable, start again with the cut piece, until you reach the open gable again. Mounted with 5 x 70 mm chipboard screws. The plates must reach down and support the bottom frame and be cut out for corner brackets.

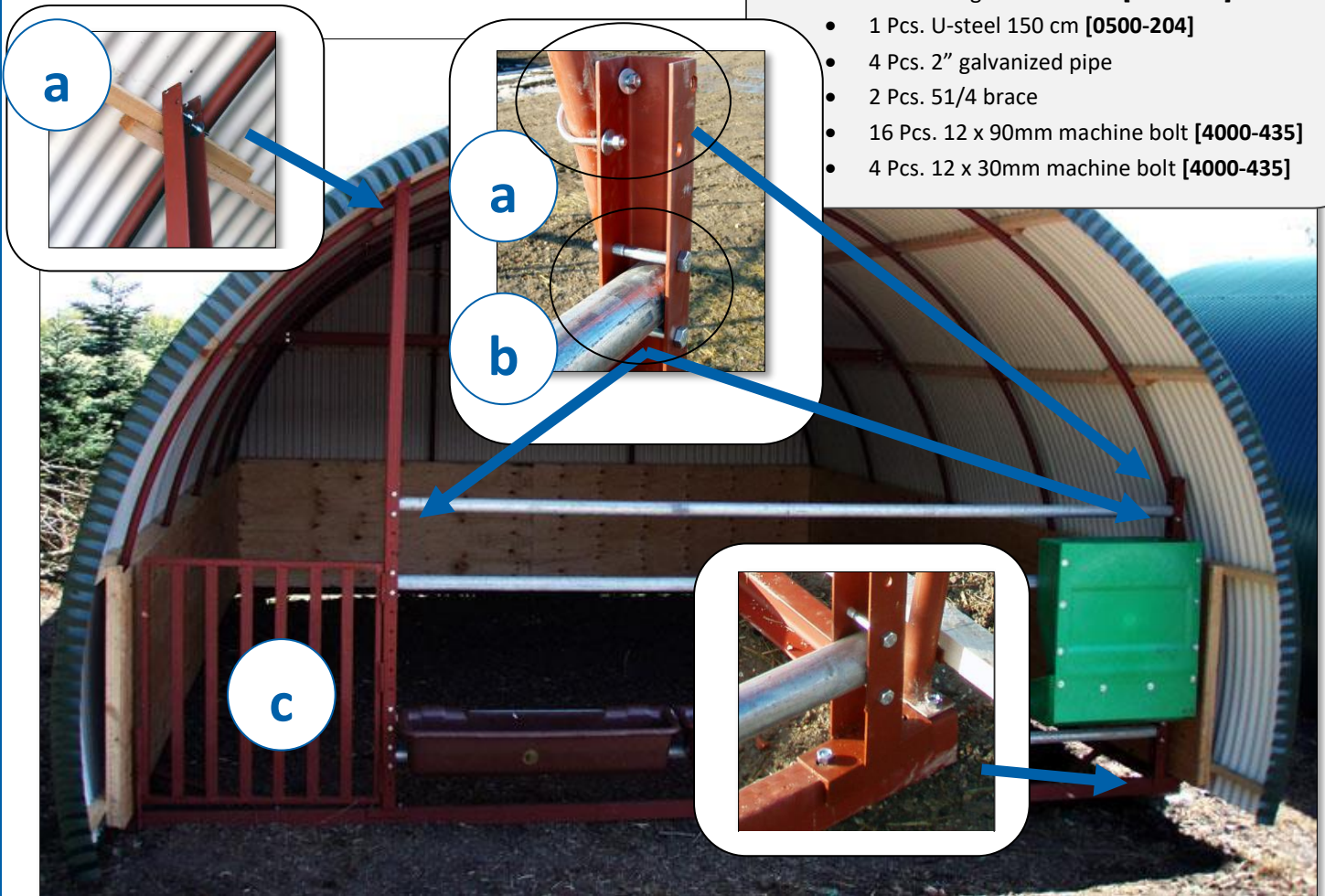


5. Animal gate

If the foreclosure is a retrofit: Drill 4 holes (12.5 mm) in the bottom frame, as shown in the accompanying drawing.

- Fit the 2 vertical u-steel posts without tightening them completely. The steel post is fastened at the top to the rafters with the bracket and 12 x 30 mm machine bolt on the bottom frame.
- Mount the horizontal pipes at the desired height with 12 x 90 mm machine bolts.
- Now tight everything and mount the door.

- 1 Pcs. Door 1x1 m [0500-203]
- 1 Pcs. U-steel 275 cm [0500-204]
With fittings for the door [0500-202]
- 1 Pcs. U-steel 150 cm [0500-204]
- 4 Pcs. 2" galvanized pipe
- 2 Pcs. 51/4 brace
- 16 Pcs. 12 x 90mm machine bolt [4000-435]
- 4 Pcs. 12 x 30mm machine bolt [4000-435]



6. Door

If the door is a retrofit: Drill 2 holes (12.5 mm) in the bottom frame, as shown in the accompanying drawing.

(a) Start with vertical posts and align the door panels.

Important: The two vertical posts must be perpendicular, otherwise the doors will not close the same.

Tip: Adjustment can also be made in the roof battens

(b) Mount Wood and plates

(c) Saw the light window over the door with hand scissors or an angle grinder.

- 2 Pcs. gable posts [0500-180]
- 2 Pcs. Door [2200-115]
- 3½ Pcs. Roof battens in. 6m [3856-600]
- 4 Pcs. Gable plates [0500-560]
- 1 pc. Drip rail over the door [4200-400]
- 100 Pcs. 4,8 x 35 mm [4000-440]
- 18 Pcs. 8 x 50 mm bolts [4000-440]
- 4 Pcs. 12 x 30mm machine bolts [4000-440]
- 1 Pcs. Light window [20PC-260]



7. Extension

Important: the joints on the bottom frame (a) must be offset from the joints on the rafters / pipe arches (b) for the structure to be as strong as possible.

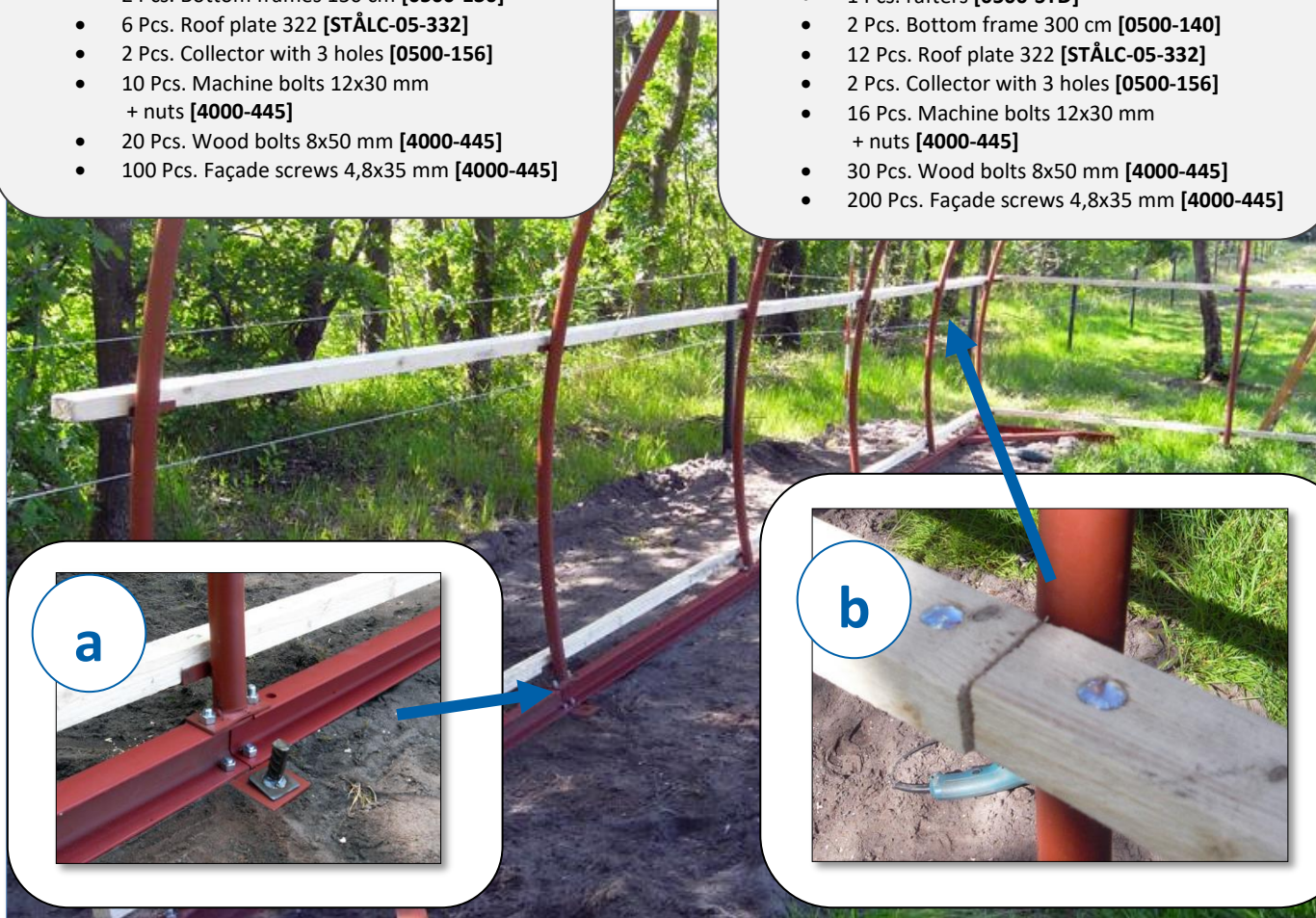
For details about the setup, we refer to the first steps

1,5-meter extension:

- 1 Pcs. Collector rafters [0500-HULX2]
- 2 Pcs. Bottom frames 150 cm [0500-130]
- 6 Pcs. Roof plate 322 [STÅLC-05-332]
- 2 Pcs. Collector with 3 holes [0500-156]
- 10 Pcs. Machine bolts 12x30 mm + nuts [4000-445]
- 20 Pcs. Wood bolts 8x50 mm [4000-445]
- 100 Pcs. Façade screws 4,8x35 mm [4000-445]

3-meter extension:

- 1 Pcs. Collector rafters [0500-HULX2]
- 1 Pcs. rafters [0500-STD]
- 2 Pcs. Bottom frame 300 cm [0500-140]
- 12 Pcs. Roof plate 322 [STÅLC-05-332]
- 2 Pcs. Collector with 3 holes [0500-156]
- 16 Pcs. Machine bolts 12x30 mm + nuts [4000-445]
- 30 Pcs. Wood bolts 8x50 mm [4000-445]
- 200 Pcs. Façade screws 4,8x35 mm [4000-445]



Illustrated here with 1.5-meter extension

Note: extended cabins are always delivered without a lifting device

8. overhang

- (a) When retrofitting overhangs, the battens are mounted on top of the existing battens.
- (b) Mount the battens abundantly long and saw off where you end up with the steel plate.

Important: If the cottage is used by animals, the overhangs must be protected with corner posts or electric fences



Contact information

Austria



Belgium



Croatia



Denmark



Estonia



Finland



France



Germany



Ireland



Italy



Latvia



Lithuania



Nederland



Norway



Poland



Portugal



Spain



Sweden



Switzerland



UK

